



# THE OHIO DEPARTMENT OF MRDD

Ohio.gov MRDD

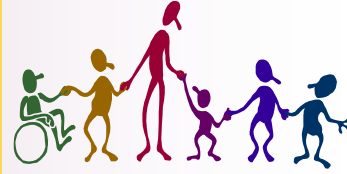
Your Monthly Update For Individual Information Form (IIF) and Individual Data System (IDS) News!

## Individual Data System (IDS) e-Bulletin

### Individual Data System ✓ UPDATE

IDS continues to evolve and remains on schedule. To date, the Guardian, PASRR, ODDP, Acuity Assessment Instrument, and the Waiting List applications have been moved into the system. Next steps include mapping the applications to ensure that they “talk” to each other and going through the process of eliminating redundant and/or obsolete fields.

Issue 7—January 2009



**IDS — BRINGING INFORMATION (and people) TOGETHER**

### IMPORTANT INFORMATION ■ IIF Changes

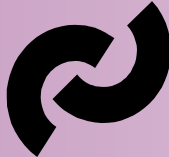
To eliminate the creation of duplicate IIF records, the **Number Assignment** process has been updated! You can now open new IIF records for people WITHOUT having to obtain their social security number. First name, last name and date of birth are all that is required. Just open the IIF application, click the “New” link, and input the information as before. But notice that social security number is now an *optional* field. And regarding the potential for duplicates.....we’ve added functionality that will help you avoid creating a duplicate record. When entering a person, a potential list of duplicates will become visible from which you can select if that record exists. If no duplicate is found, you may proceed to open a new record yourself. Detailed instructions can be found in the IIF application.

### Newsletter Spotlight

**GOOD NEWS! WHILE WE’RE STILL USING IIF, READ THIS MONTH’S E-BULLETIN FOR A NEW USER FUNCTION THAT ALLOWS YOU TO OPEN IIF RECORDS WITHOUT A SOCIAL SECURITY NUMBER!**

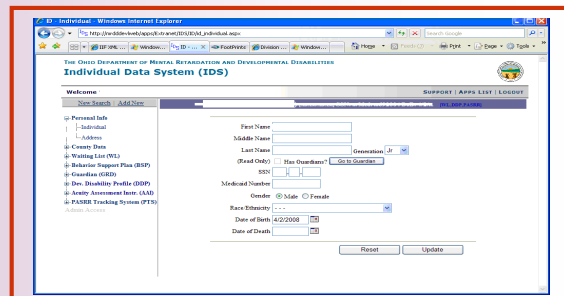
For more information—contact [IIF.support@odmrdd.state.oh.us](mailto:IIF.support@odmrdd.state.oh.us)

### IIF Data.... A 2007 → 2008 ADM DATA COMPARISON



	2007	2008	CHANGE	% CHANGE
Total ADM	70187	72922	2735	3.90%
Total Reported	77798	80665	2867	3.69%
Difference	7611	7743	132	1.73%

# Counties with a decrease in Reported between 2007 & 2008	34
# Counties with an increase in Reported between 2007 & 2008	53
# Counties with no change in Reported between 2007 & 2008	1
# Counties with a decrease in ADM between 2007 & 2008	27
# Counties with an increase in ADM between 2007 & 2008	56
# Counties with no change in ADM between 2007 & 2008	5
# Counties with a decrease in Difference between 2007 & 2008	56
# Counties with an increase in Difference between 2007 & 2008	25
# Counties with no change in Difference between 2007 & 2008	7



### SNEAK PEAK #3 - GENERAL INFO

Questions, comments or to be removed from the listserv— contact [leslie.minnich@dmr.state.oh.us](mailto:leslie.minnich@dmr.state.oh.us)