

Individual Data System (IDS) Update

Work Teams Meet to Revise IIF

Issue 1—July 10, 2008

Beginning in September 2007 and continuing through February 2008, ODMRDD and IIF Coordinators from counties across Ohio (see Newsletter Spotlight) met to review, revise, eliminate, add, merge and/or link IIF fields within the application for a new IIF for 2008. ODMRDD then took the work and began the process of updating the application on the IT end of the system. Next steps include designing new screens, writing new code, establishing data dictionaries, developing reports and training.

[Stay tuned for more IDS progress.....](#)

Where Are We Now?

The development of a new data collection application, called the **Individual Data System (IDS)**, is underway at the Ohio Department of Mental Retardation and Developmental Disabilities (ODMRDD). An upgrade of the former 'Individual Information Form (IIF)' this new *data collection system* will: allow for a more meaningful and accurate data set; provide a more user-friendly, stream-lined data entry format inside multiple applications; provide updated supplementary resources such as training modules and directories; and will ultimately enable the user to have access to the data at both the state and local levels via Cognos. The IDS application is currently in the design and development phase. The plan is to finalize this phase by the end of August, and to begin testing and documentation in September.

Vendors!!!! Contact Leslie Minnich at leslie.minnich@dmr.state.oh.us for xml schema information!!!!



Partnering—
County Boards and
ODMRDD!

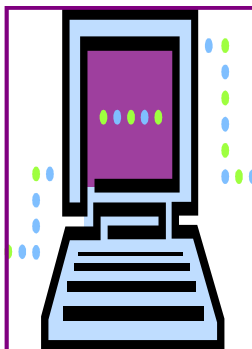
Newsletter Spotlight

THANK YOU TO

DELAWARE, MEDINA, TUSCARAWUS, MONTGOMERY, LORAIN, PREBLE, SHELBY, WILLIAMS AND ERIE

COUNTIES FOR THEIR HELP IN REDESIGNING THE IIF! WE COULDN'T HAVE DONE IT WITHOUT YOU!!

Using Individual Data Systems (IIF) data for NCI



IIF Clean-Up !!

Recently, the Ohio Department of Mental Retardation and Developmental Disabilities adopted the National Core Indicators (NCI) as a basis for measuring the performance of and improving Ohio's MRDD service delivery system. Beginning in August, over four hundred individuals with disabilities will participate in the face-to-face consumer survey and 3000 families will receive surveys in the mail.

What does this mean for you? On July 28, 2008, ODMRDD will use the IIF data to draw the sample for all of the National Core Indicators surveys. It will be imperative that your IIF data is correct and that people are identified as receiving the correct services and supports (residential and day programs, EI, SSA, FS, etc.). Please go into the ODMRDD Application Portal at <https://odmrdd.state.oh.us/apps/> to access your county's error reports and to update the information.

If you have questions about the content of your county's error report, please contact iif.support@odmrdd.state.oh.us for assistance!