



www.mrdd.ohio.gov

# Ohio Department of MRDD (ODMRDD)

Your Monthly Update For Individual Information Form (IIF) and Individual Data System (IDS) News!

## Individual Data System (IDS) e-Bulletin

### IIF Reporting 2008

IIF reporting week is upon us! Please see the list of dates below regarding this year's IIF data submission.

**October 6-10, 2008**—IIF reporting week. This is the first full week of October.

**October 31, 2008**—last day to submit IIF data. You must have all of your data submitted, via web application or xml schema by this date. We will lock the system on November 1, 2008 to process the data.

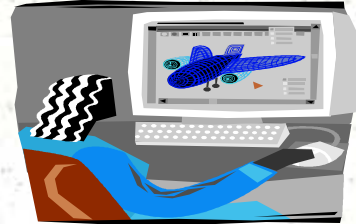
**November 21, 2008**— between November 1 and November 21, 2008, we will work with each county to clean up the data.

**November 28, 2008**—Superintendent Signature Document due.

### Where Are We Now?

**The IDS continues to evolve! We've incorporated Guardian, Behavior Support, PASRR, Waiting List and ODDP applications. Stay tuned for further updates!**

Issue 4—October 2008



**Building a Client-Centric Data System**

### Newsletter Spotlight

**FINAL IIF 2007 CLEAN UP INFORMATION LISTED BELOW! THANK YOU TO ALL 88 COUNTIES FOR WORKING SO HARD TO CLEAN UP ALL OF YOUR IIF DATA!**

**NEXT IT'S TIME TO WORK ON IIF 2008. LET'S GO!**

For more information go to [IIF.support@odmrdd.state.oh.us](mailto:IIF.support@odmrdd.state.oh.us)

### IIF 2007 Clean-Up—DEMOGRAPHICS



**October's IIF clean up will include multiple fields. IIF Coordinators, watch your e-mail for a report specific to your county that includes the following:**

**Behavior Plan**—this part of the report shows all of the people in your county designated as "yes", having a behavior plan. Please ensure this field's accuracy as we will be using this information as part of the Positive Intervention Culture initiative.

**Gender and Race**—you will receive this information together in the second part of your error report. This will designate individuals in your county for whom there is no race and/or gender designated.

**Living Arrangement**—the third part of your report includes errors related to the living arrangement field. When we were pulling data from our systems (waiver, ICFMR, IIF) for the National Core Indicators sample, we found many questionable living arrangement selections. For example, we have folks identified in the ICF and waiver databases who are listed in IIF as living in #5-nursing homes, #6-other, and #7-other licensed facilities.

**County Board Program— #10 Adult Assessment**—this is a time-limited category of 90 days maximum. This part of the error report includes anyone who will have been enrolled in adult assessment for more than 90 days by the end of October count week on the 10th.

### Building IDS

**More details are included in your county's report. Please contact [leslie.minnich@dmr.state.oh.us](mailto:leslie.minnich@dmr.state.oh.us) if you have any other questions.**

Questions or comments or to be removed from the listserv—[iif.support@odmrdd.state.oh.us](mailto:iif.support@odmrdd.state.oh.us) or call 614.728.2518