



www.mrdd.ohio.gov

Ohio Department of MRDD (ODMRDD)

Your Monthly Update For Individual Information Form (IIF) and Individual Data System (IDS) News!

Individual Data System (IDS) e-Bulletin

IIF Reporting 2008

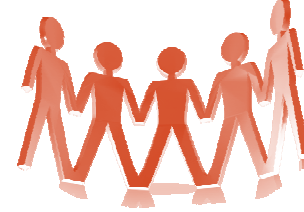
The IDS application, originally slated for implementation this summer, has been rescheduled for debut in 2009. **For the 2008 October 6–10 reporting period, we will use the IIF application as it currently exists. There will be no changes in IIF reporting for the 2008 reporting year.**

Where Are We Now?

In September, the ODMRDD and the IIF/IDS Project Team counties initiated testing of the new IDS application. On 9.12.08, the group met via conference call to discuss their findings and recommendations for improvements. Feedback was positive and County Board IIF Coordinators expressed overwhelming approval of the new application and reported that they found the new application to be more user-friendly, much easier to navigate, a time saver in regard to its new client-centric design, and were very pleased that the data collected via this new application was streamlined and relevant to County Board and Department needs. Minor alterations will occur based on feedback and a second round of testing will be scheduled.

For more information go to IIF.support@odmrdd.state.oh.us

Issue 3—September 2008

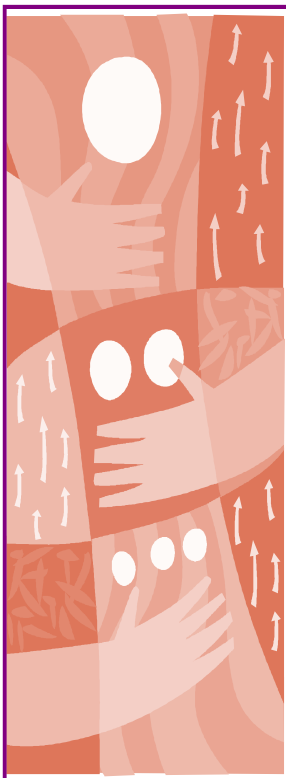


Working Together to Design IDS

Newsletter Spotlight

TRAINING FOR NEW IIF COORDINATORS IS SCHEDULED 10.1.08. IF YOU ARE A NEW IIF COORDINATOR AND WISH TO ATTEND ONE OF TWO HALF DAY TRAINING SESSIONS, PLEASE GO TO THE ODMRDD WEBSITE TO SIGN UP.

IIF 2008 Clean-Up—PROGRAM



Individuals Enrolled as values	0 - 2	3 - 5	6 - 15	16 - 21	22 - 54	55 and Over
1-Early Intervention	8,536	2,329	213	13	5	2
2-Pre School	5	2,300	365	21	0	0
3-School	2	28	1,584	1,047	74	0
4-Supported Education	0	105	694	336	12	0
8-Childrens Enrichment	8	269	644	281	17	1
10-Adult Assessment	0	1	0	27	81	9
11-Adult Home Services	0	3	1	15	182	115
12-Adult Non-Vocational	0	0	0	81	3,936	978
13-Sheltered Workshop	0	0	1	398	11,537	2,785
14-Workshop/Community Training	0	0	8	173	1,277	217
15-Community Training/Employment < 10 Hrs	0	0	0	47	591	85
16-Community Employment 10+ Hrs	0	0	0	305	5,186	592
17-Retirement	0	0	0	2	184	1,191
18-Self Determined Supports	0	0	17	271	844	178

Building IDS

Each county will be contacted with your own specific errors. Please note statewide totals above. Two 55 year olds in Early Intervention?

Questions or comments or to be removed from the e-mail list—iif.support@odmrdd.state.oh.us or call 614.728.2518