



THE OHIO
DEPARTMENT OF MRDD

IDS Screenshots

IDS (and former IIF) screenshots are attached for your convenience. The IDS screenshots include all Basic Information, and County Data screens. Guardian screens will be sent at a later date.

These screenshots are provided to assist you as you work through the Data Conversion document, and in your comparison of the old IIF fields to the new IDS fields.

Notice!

It is highly recommended that you update your IIF data as much as possible prior to the switch to IDS on 8.20.09. Also recommended is that for those of you who xml upload, that you complete and upload process prior to 8.20.09 as well.

Please see the attached IDS screenshots for an idea of which fields are being kept in IDS and which are not. This may help you streamline your updating!

IDS e-Bulletin *EXTRA*

JULY 2009

Data Conversion—The Process

On 8.21.09, the IIF system will be officially retired and the new Individual Data System (IDS) will “Go Live”! The Department will convert the data from the former IIF fields to their equivalent locations within the new IDS application on the evening of 8.20.09.

This data conversion process, also known as “data mapping”, will take place entirely behind the scenes and should be completely transparent to the user. You should be able to log in to the new IDS on 8.21.09 and continue your work seamlessly!

As part of the conversion process, it is important for you to know how the fields will map. A [Data Conversion](#) document for each new IDS section is

attached for your review that provides you with the following:

- 1) A list of former IIF fields;
- 2) A list of new IDS fields;
- 3) Comments and/or



Mapping IIF Data to IDS

instructions for fields that did not map with a one-to-one correspondence.

What this means for IIF/IDS users is that some fields in the new IDS are exactly the same as

they were in IIF and mapped with a one-to-one correspondence, others were deleted from IIF so they will not appear in IDS (that data will be stored as history), and some fields were changed or updated so that data was mapped to the most appropriate like-field in IDS. In these instances, please follow the directions on the Data Conversion document to “move” the data to the appropriate field. For example, former IIF data in the Adult Non-Vocational and Retirement fields will both be mapped to Adult Day Services in new IDS and so on.

Please contact Leslie Minnich at 614.728.2518 or by email leslie.minnich@dmr.state.oh.us.

About the IDS XML Schema

Some counties send IIF data to the Department via an XML schema. The XML (extensible markup language) schema is created by the Department and is designed to facilitate the sharing of large amounts of structured data from one IT system to another. Currently about 33 counties send their IIF data to the Department in this manner.

As part of the system redesign,

we must also create a new XML schema for those counties who submit their data in this fashion.

Remember, first name, last name, date of birth and Medicaid number cannot be UPDATED or changed in an XML upload. To make these kinds of changes, you must go to the Department’s Application Portal and update the information there. Using this direct entry method will assist us in reducing

the number of overwritten and duplicated records in the IIF/IDS system.

If you are a county who uploads via XML, please contact your vendor to obtain needed software.

If you have questions or need assistance, please contact IIF.support@odmrdd.state.oh.us. PLEASE NOTE—IIF.support will soon become IDS.support



www.mrdd.ohio.gov

The Ohio Department of MRDD

30 E Broad Street
12th Floor
Columbus OH 43215

Phone: 614.728.2518
Fax: 614.728.7072
E-mail: leslie.minnich@dmr.state.oh.us

Soon the be the Ohio Department of
Developmental Disabilities!

“A true friend knows your weaknesses but shows you your strengths; feels your fears but fortifies your faith; sees your anxieties but frees your spirit; recognizes your disabilities but emphasizes your possibilities”

~William Arthur Ward



IDS Training Information

Because the Individual Data System (IDS) is so new, eight half-day training sessions are being scheduled. The sessions will be held via the Elluminate web-conferencing system and each session will have a separate login address and password (provided at a later date). It is important that if you have not used Elluminate in the past, that you go to the website at www.Elluminate.com to be sure that you have the appropriate software on your computer to view the sessions.

PLEASE NOTE that we will NOT use the speaker and microphone functions in Elluminate, but will communicate via the bridge line (outgoing) and via the online chat (incoming) on each Elluminate training session's home page. So please mute your phones during the training sessions and ask your questions via the Elluminate chat function. We will monitor the chat and relay your questions.

IDS Training Sessions are scheduled as follows:

Session #1—Monday 8.17.09, 9:00am-12:00pm

Session #2—Monday 8.17.09, 1:00pm-4:00pm

Session #3—Tuesday 8.18.09, 9:00am-12:00pm

Session #4—Tuesday 8.18.09, 1:00pm-4:00pm

Session #5—Wednesday 8.19.09, 9:00am-12:00pm

Session #6—Wednesday 8.19.09, 1:00pm-4:00pm

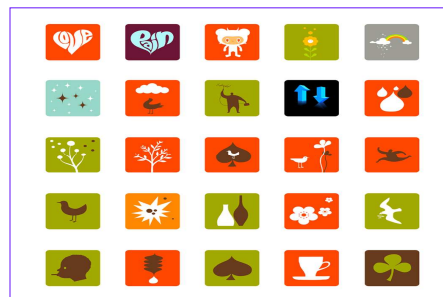
Session #7-Thursday 8.21.09, 9:00am-12:00pm
Bridgeline #216-787-0997

Session #8-Thursday 8.21.09, 1:00pm-4:00pm

In addition to the web conference Elluminate training sessions, a Power Point will be available on the Department's website for a quick review of the IDS and how it works.

Additional training sessions may be scheduled in the event that the currently scheduled sessions become full. Stay tuned for future training updates.

Other training materials will be available via the IDS listserv and on the Department's website. You may also contact Leslie Minnich if you need assistance at: leslie.minnich@dmr.state.oh.us.



IDS—Always Green (Training)!